

JABRA EASYGO

Bluetooth[®] Headset

Works with any Bluetooth[®] enabled phone

DATASHEET



Easy talking for driving, working or walking

Looking for your first Bluetooth[®] headset? The Jabra EASYGO makes choosing easy. It gives you all the extraordinary benefits of hands free conversation at a no-nonsense price. There are no complex functions and installation is fast and straightforward.

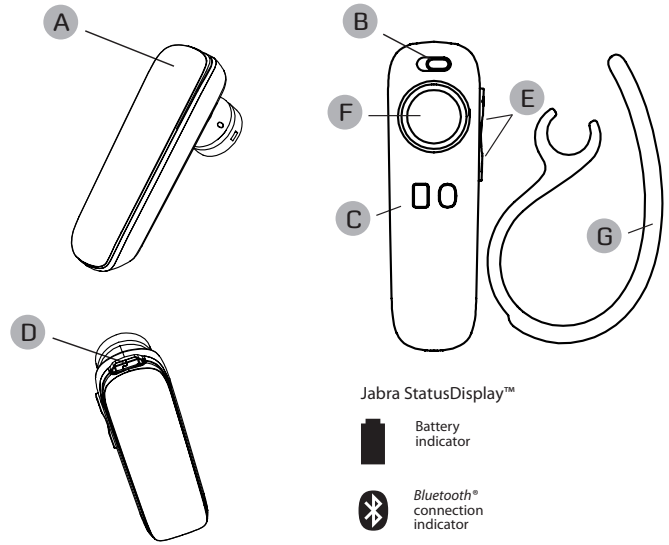
The Jabra EASYGO is stylish yet discreet, and its lightness and shape make it a joy to wear. It has DSP technology for crystal clear sound and an automatic volume control that keeps volume constant even when you move between quiet and noisy environments. It also has Voice Guidance that tells you when it is connected to your phone and if you need to recharge it. You can even pair the Jabra EASYGO with two Bluetooth devices simultaneously. Use it at work, on-foot or in the car. A quality headset that sounds and looks great, the Jabra EASYGO makes it easy to talk on the move.



Reasons to choose the Jabra EASYGO

- Spoken battery and connection status
- Connects to 2 Bluetooth devices simultaneously
- Crystal clear sound and voice (DSP)





- A Answer/end button**
- B On/off button**
- C StatusDisplay™**
With battery indicator and connection indicator
- D Charging socket**
- E Volume up/down**
- F Jabra Ultimate Comfort Eargel™**
- G Jabra Earhook**

Quick Start Guide

Charging your headset

While charging the headset, the battery indicator will show solid red. When the headset is charged, the battery indicator will turn solid green and turn off after 5 minutes. Charging time is approximately 2 hours.

Turning your headset on and off

Slide the "on/off" button to turn the headset on or off.

Pairing the headset with your phone

First time pairing: Turn headset on - automatic pairing mode when Bluetooth connection indicator is flashing blue.

Later pairing: Turn headset on. Press and hold the answer/end button until Bluetooth connection indicator is flashing blue. Activate Bluetooth on your phone. Then set your phone to search for Bluetooth devices and select Jabra EASYGO. Press 'OK' on the phone and if you are asked for a PIN code, confirm with PIN 0000.

Voice Guidance

Connection Voice Alert

When your headset has successfully established connection with your phone and is ready to be used, the Jabra Voice Guidance will say "connected".

Battery Low Voice Alert

When your headset has battery for less than 30 minutes the Jabra Voice Guidance will say "low battery". This message will be repeated with a ten minute interval.

Using your headset

Answer a call – Tap the answer/end button on your headset.

End a call – Tap the answer/end button to end an active call.

Wearing style

Wear the Jabra EASYGO with or without an ear hook.

To wear with ear hook, please attach on for right or left ear wearing.

Features and Specifications

1. Edgy design combined with ease of use and long talk time
2. Up to 6 hours talk time and up to 8 days standby time
3. Lightweight – weighs only 0.3 oz (8g)
4. Wear it with or without the earhook. Two sizes earhook are provided for individual comfort. Two Ultimate comfort eargels are included to use without earhook.
5. L 2.11 x W 0.62 x H 0.35 in (L 53.7 x W 15.8 x H 9mm)
6. Bluetooth technology - clear sound with Bluetooth 2.1 + EDR & eSCO
7. Auto-pairing for no-nonsense set-up
8. Jabra Discreet Light feature – the light indicator (LED) does not continually flash
9. Features answer/end, redial and voice dial*
10. Charging plug: USB Micro-B, 5-pin

* Phone dependent

Freephone customer support numbers:

Denmark	Phone: 70252272	E-mail: support.no@jabra.com
Finland	Phone: 00800 722 52272	E-mail: support.no@jabra.com
Italy	Phone: 800 786543	E-mail: support.it@jabra.com
Norway	Phone: 800 61272	E-mail: support.no@jabra.com
Spain	Phone: 900 984 542	E-mail: support.es@jabra.com
Sweden	Phone: 020792522	E-mail: support.no@jabra.com
UK	Phone: 0800 0327026	E-mail: support.uk@jabra.com